

Applied Materials Mirra 3400 Chemical Mechanical Polishing (CMP), 6"

Asset ID: 38536

Configuration Details:

Applied Materials Mirra 3400 Chemical Mechanical Polishing (CMP), 6"

- DIWO (Dry-in wet-out)
 - Silicon Oxide, Polyimide, a-Si
 - 208 V, 200 A, 45 kVA, Standby 6,5 kVA
- 1996 Vintage



See Photos on Following Pages

To our knowledge, the information contained in this data sheet is accurate, but it may contain errors and we do not warrant the completeness or accuracy of this data.

Interested parties may contact Bridge Tronic Global for additional information at +1 949.396.1395 or sales@bridgetronic.com

Visit our website at: www.bridgetronic.com



QUICK
LEAD TIMES



QUALITY
EQUIPMENT



COMPETITIVE
PRICING

Polisher Work Station



Interested parties may contact Bridge Tronic Global for additional information at +1 949.396.1395 or sales@bridgetronic.com



QUICK
LEAD TIMES



QUALITY
EQUIPMENT



COMPETITIVE
PRICING



Interested parties may contact Bridge Tronic Global for additional information at +1 949.396.1395 or sales@bridgetronic.com



QUICK
LEAD TIMES



QUALITY
EQUIPMENT



COMPETITIVE
PRICING

Polisher Robot Fabs Module



Interested parties may contact Bridge Tronic Global for additional information at +1 949.396.1395 or sales@bridgetronic.com



QUICK
LEAD TIMES

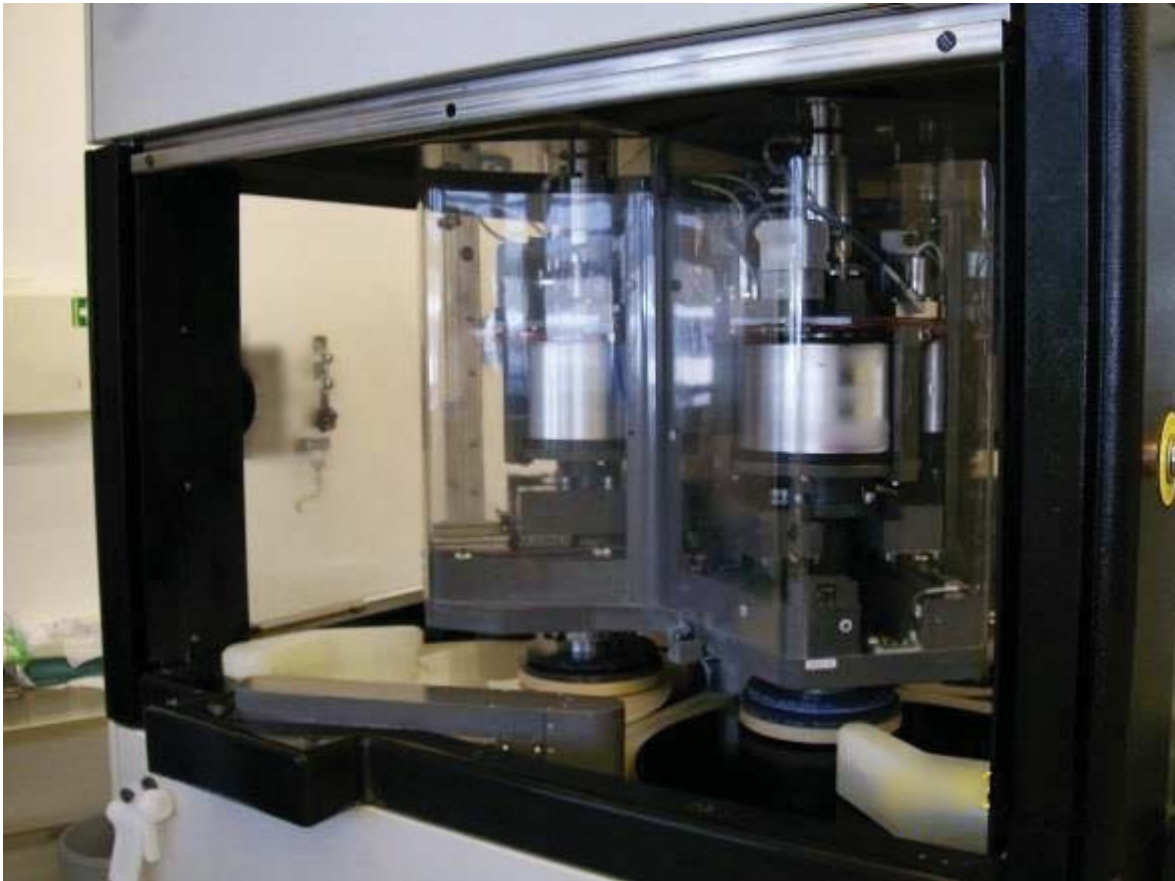


QUALITY
EQUIPMENT



COMPETITIVE
PRICING

Polisher



Interested parties may contact Bridge Tronic Global for additional information at +1 949.396.1395 or sales@bridgetronic.com



QUICK
LEAD TIMES



QUALITY
EQUIPMENT



COMPETITIVE
PRICING

Polisher Cover



Interested parties may contact Bridge Tronic Global for additional information at +1 949.396.1395 or sales@bridgetronic.com



QUICK
LEAD TIMES



QUALITY
EQUIPMENT



COMPETITIVE
PRICING

Polisher Spindel Head 1 and 2



Interested parties may contact Bridge Tronic Global for additional information at +1 949.396.1395 or sales@bridgetronic.com



QUICK
LEAD TIMES



QUALITY
EQUIPMENT



COMPETITIVE
PRICING

Polisher p11 - Slurry Check



Interested parties may contact Bridge Tronic Global for additional information at +1 949.396.1395 or sales@bridgetronic.com



QUICK
LEAD TIMES



QUALITY
EQUIPMENT



COMPETITIVE
PRICING

Polisher / Head Over p13



Interested parties may contact Bridge Tronic Global for additional information at +1 949.396.1395 or sales@bridgetronic.com



QUICK
LEAD TIMES



QUALITY
EQUIPMENT



COMPETITIVE
PRICING

Polisher HCLU



Interested parties may contact Bridge Tronic Global for additional information at +1 949.396.1395 or sales@bridgetronic.com



QUICK
LEAD TIMES

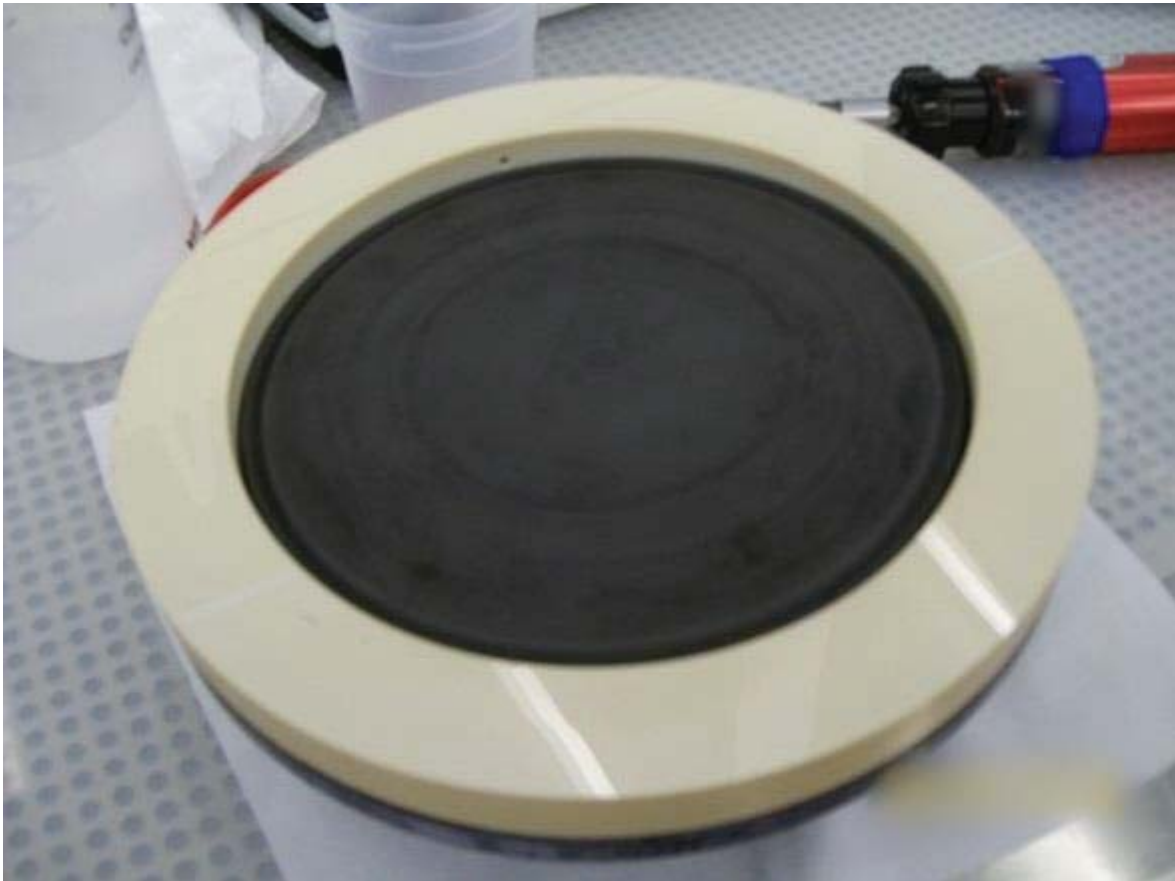


QUALITY
EQUIPMENT



COMPETITIVE
PRICING

Two heads Titan II included



Interested parties may contact Bridge Tronic Global for additional information at +1 949.396.1395 or sales@bridgetronic.com



QUICK
LEAD TIMES



QUALITY
EQUIPMENT



COMPETITIVE
PRICING

E-Rack



Interested parties may contact Bridge Tronic Global for additional information at +1 949.396.1395 or sales@bridgetronic.com



QUICK
LEAD TIMES



QUALITY
EQUIPMENT



COMPETITIVE
PRICING

E-Rack MEI Boards



Interested parties may contact Bridge Tronic Global for additional information at +1 949.396.1395 or sales@bridgetronic.com



QUICK
LEAD TIMES

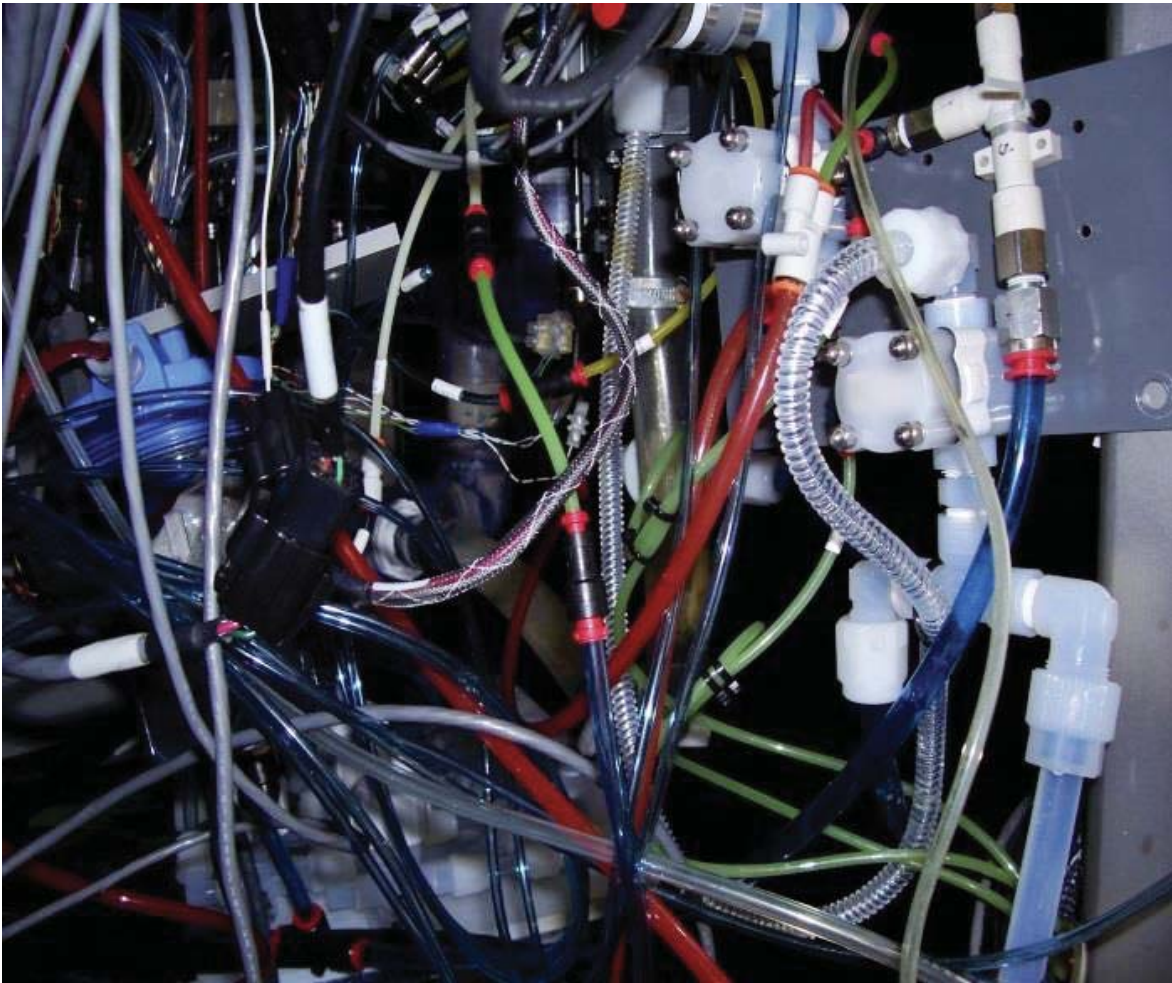


QUALITY
EQUIPMENT



COMPETITIVE
PRICING

Polisher Intern Facility



Interested parties may contact Bridge Tronic Global for additional information at +1 949.396.1395 or sales@bridgetronic.com



QUICK
LEAD TIMES



QUALITY
EQUIPMENT



COMPETITIVE
PRICING



APPLIED MATERIALS

3050 BOWERS AVE., SANTA CLARA, CA 95054

MODEL: CMP 5201 SERIAL NO. [REDACTED]

VOLTAGE: 200/208VAC, 3 Ø FREQUENCY: 50/60 Hz

FULL LOAD CURRENT : 200A **3 WIRE (DELTA)**

MAXIMUM SYSTEM RATING: 72 KW

AMPERE RATING OF LARGEST LOAD: 30A

SCHEMATIC DIAGRAM NO.: 0180-77001

YEAR OF CONSTRUCTION: 1996

Interested parties may contact Bridge Tronic Global for additional information at +1 949.396.1395 or sales@bridgetronic.com



QUICK
LEAD TIMES



QUALITY
EQUIPMENT



COMPETITIVE
PRICING