

## Matrix System 10, Model 1178 Plasma Stripper, 8"

Asset ID: 9888

### Configuration:

Matrix System 10, Model 1178 Plasma Stripper, 8"

- One strip chamber and one RIE chamber with water vapor
- One PC for one chamber missing
- Main PC dead/dying

1997 Vintage



### More Photos on Following Pages

To our knowledge, the information contained in this data sheet is accurate, but it may contain errors and we do not warrant the completeness or accuracy of this data.

Interested parties may contact Bridge Tronic Global for additional information at +1 949.396.1395 or [sales@bridgetronic.com](mailto:sales@bridgetronic.com)

Visit our website at: [www.bridgetronic.com](http://www.bridgetronic.com)



QUICK  
LEAD TIMES



QUALITY  
EQUIPMENT



COMPETITIVE  
PRICING



*Interested parties may contact Bridge Tronic Global for additional information at +1 949.396.1395 or [sales@bridgetronic.com](mailto:sales@bridgetronic.com)*



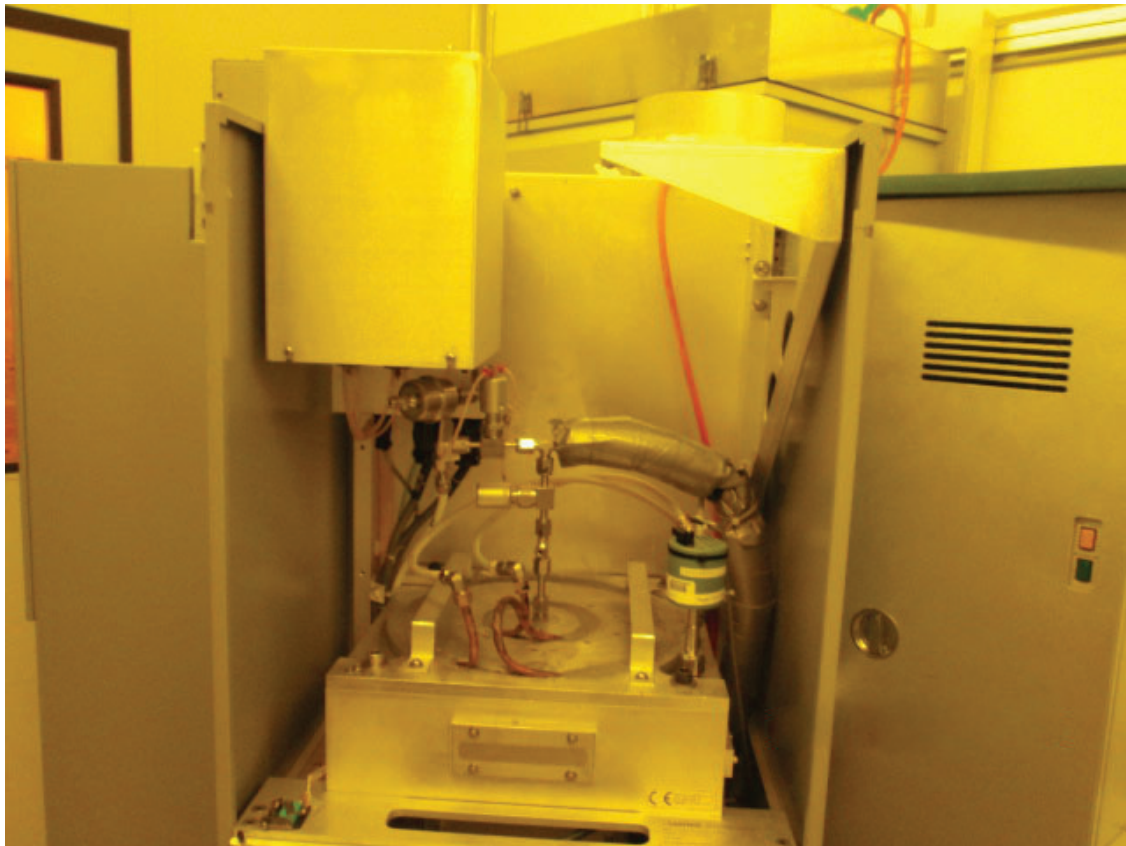
QUICK  
LEAD TIMES



QUALITY  
EQUIPMENT



COMPETITIVE  
PRICING



*Interested parties may contact Bridge Tronic Global for additional information at +1 949.396.1395 or [sales@bridgetronic.com](mailto:sales@bridgetronic.com)*



QUICK  
LEAD TIMES



QUALITY  
EQUIPMENT



COMPETITIVE  
PRICING



*Interested parties may contact Bridge Tronic Global for additional information at +1 949.396.1395 or [sales@bridgetronic.com](mailto:sales@bridgetronic.com)*



QUICK  
LEAD TIMES



QUALITY  
EQUIPMENT



COMPETITIVE  
PRICING



*Interested parties may contact Bridge Tronic Global for additional information at +1 949.396.1395 or [sales@bridgetronic.com](mailto:sales@bridgetronic.com)*



QUICK  
LEAD TIMES



QUALITY  
EQUIPMENT



COMPETITIVE  
PRICING



*Interested parties may contact Bridge Tronic Global for additional information at +1 949.396.1395 or [sales@bridgetronic.com](mailto:sales@bridgetronic.com)*



QUICK  
LEAD TIMES



QUALITY  
EQUIPMENT



COMPETITIVE  
PRICING



Interested parties may contact Bridge Tronic Global for additional information at +1 949.396.1395 or [sales@bridgetronic.com](mailto:sales@bridgetronic.com)



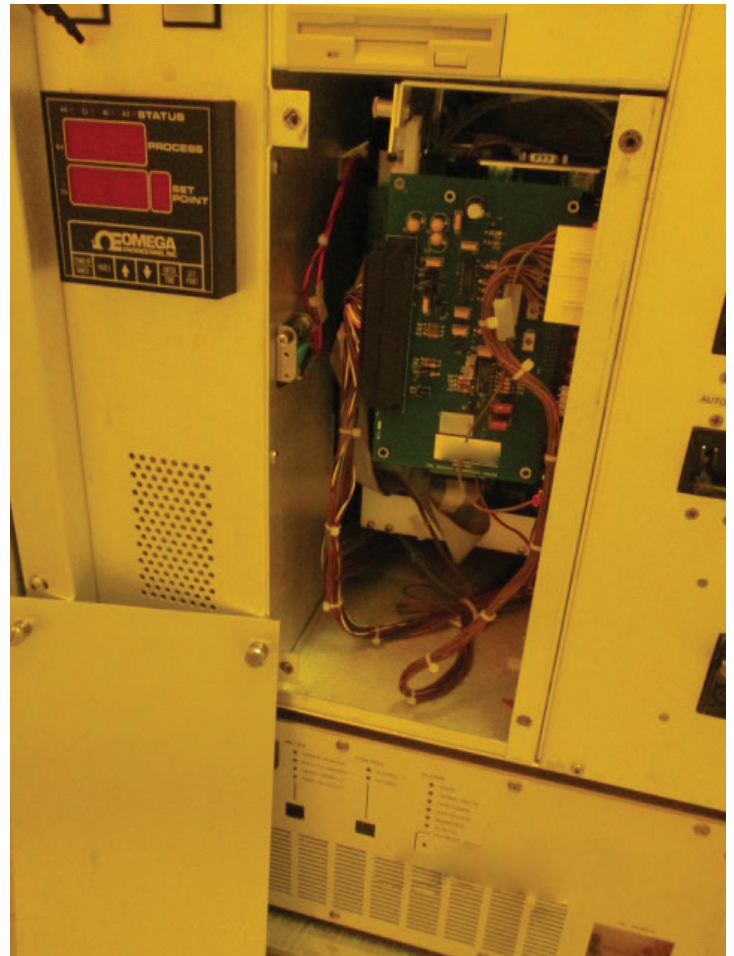
QUICK  
LEAD TIMES



QUALITY  
EQUIPMENT



COMPETITIVE  
PRICING



Interested parties may contact Bridge Tronic Global for additional information at +1 949.396.1395 or [sales@bridgetronic.com](mailto:sales@bridgetronic.com)



QUICK  
LEAD TIMES

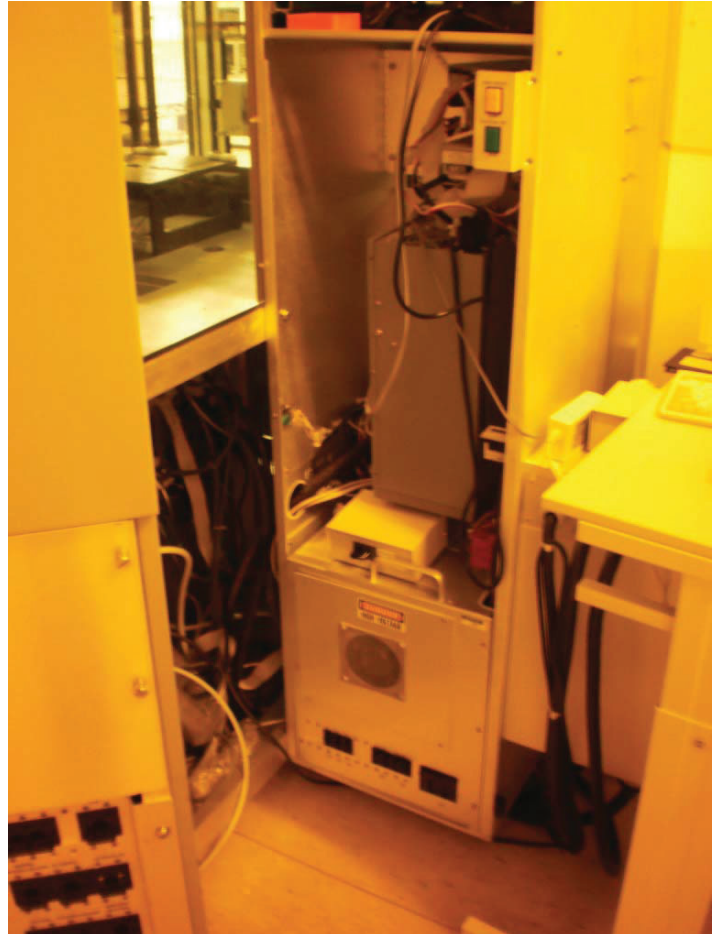


QUALITY  
EQUIPMENT



COMPETITIVE  
PRICING





*Interested parties may contact Bridge Tronic Global for additional information at +1 949.396.1395 or [sales@bridgetronic.com](mailto:sales@bridgetronic.com)*



QUICK  
LEAD TIMES



QUALITY  
EQUIPMENT



COMPETITIVE  
PRICING



*Interested parties may contact Bridge Tronic Global for additional information at +1 949.396.1395 or [sales@bridgetronic.com](mailto:sales@bridgetronic.com)*



QUICK  
LEAD TIMES



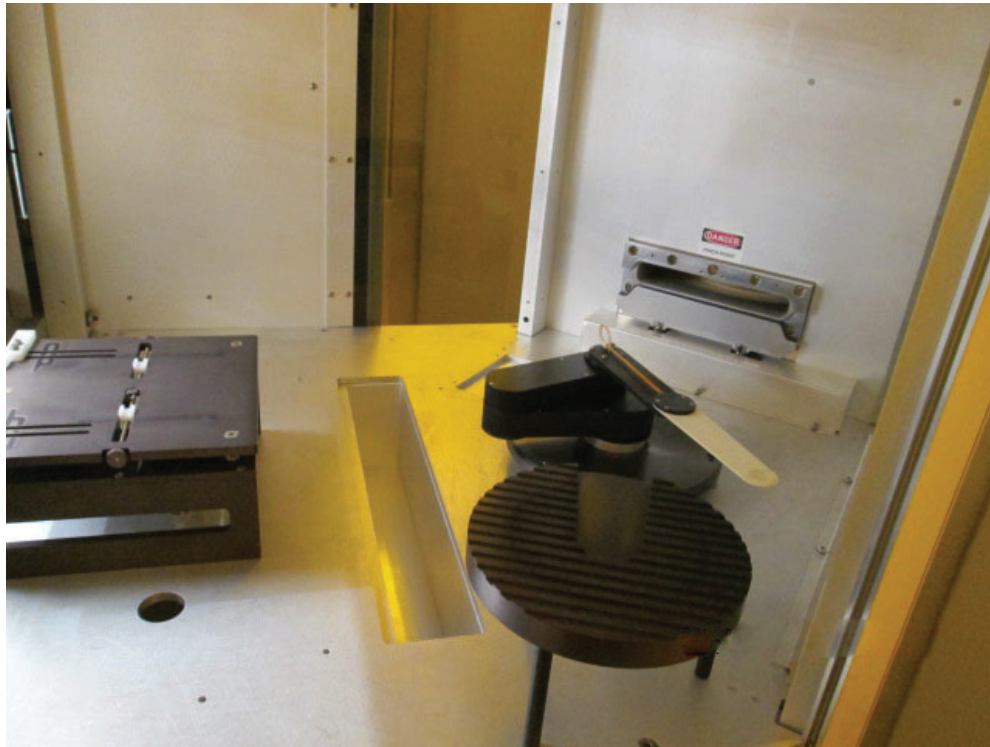
QUALITY  
EQUIPMENT



COMPETITIVE  
PRICING

# BT Bridge Tronic

— G L O B A L —



*Interested parties may contact Bridge Tronic Global for additional information at +1 949.396.1395 or [sales@bridgetronic.com](mailto:sales@bridgetronic.com)*



QUICK  
LEAD TIMES



QUALITY  
EQUIPMENT



COMPETITIVE  
PRICING

1001 W 17th Street, Suite B | Costa Mesa, CA 92627 USA | Office: +1 949.396.1395



*Interested parties may contact Bridge Tronic Global for additional information at +1 949.396.1395 or [sales@bridgetronic.com](mailto:sales@bridgetronic.com)*



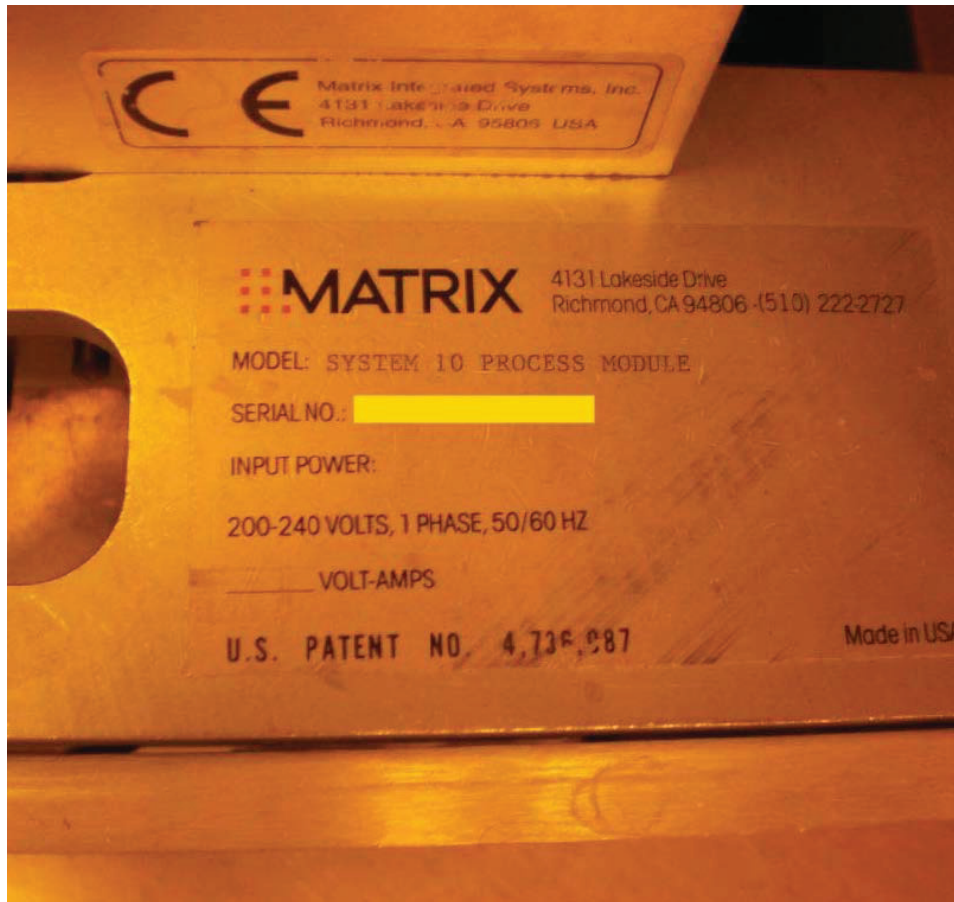
QUICK  
LEAD TIMES



QUALITY  
EQUIPMENT



COMPETITIVE  
PRICING



Interested parties may contact Bridge Tronic Global for additional information at +1 949.396.1395 or [sales@bridgetronic.com](mailto:sales@bridgetronic.com)



QUICK  
LEAD TIMES



QUALITY  
EQUIPMENT



COMPETITIVE  
PRICING