

Applied Materials Centura, 6"

Asset ID: 32104

Configuration:

Applied Materials Centura
- 2x Dry Si Etch Chambers
2001 Vintage Vintage



More Photos on Following Pages

To our knowledge, the information contained in this data sheet is accurate, but it may contain errors and we do not warrant the completeness or accuracy of this data.

Interested parties may contact Bridge Tronic Global for additional information at +1 949.396.1395 or sales@bridgetronic.com



QUICK
LEAD TIMES



QUALITY
EQUIPMENT



COMPETITIVE
PRICING



Interested parties may contact Bridge Tronic Global for additional information at +1 949.396.1395 or sales@bridgetronic.com



QUICK
LEAD TIMES



QUALITY
EQUIPMENT



COMPETITIVE
PRICING



Interested parties may contact Bridge Tronic Global for additional information at +1 949.396.1395 or sales@bridgetronic.com



QUICK
LEAD TIMES



QUALITY
EQUIPMENT



COMPETITIVE
PRICING



Interested parties may contact Bridge Tronic Global for additional information at +1 949.396.1395 or sales@bridgetronic.com



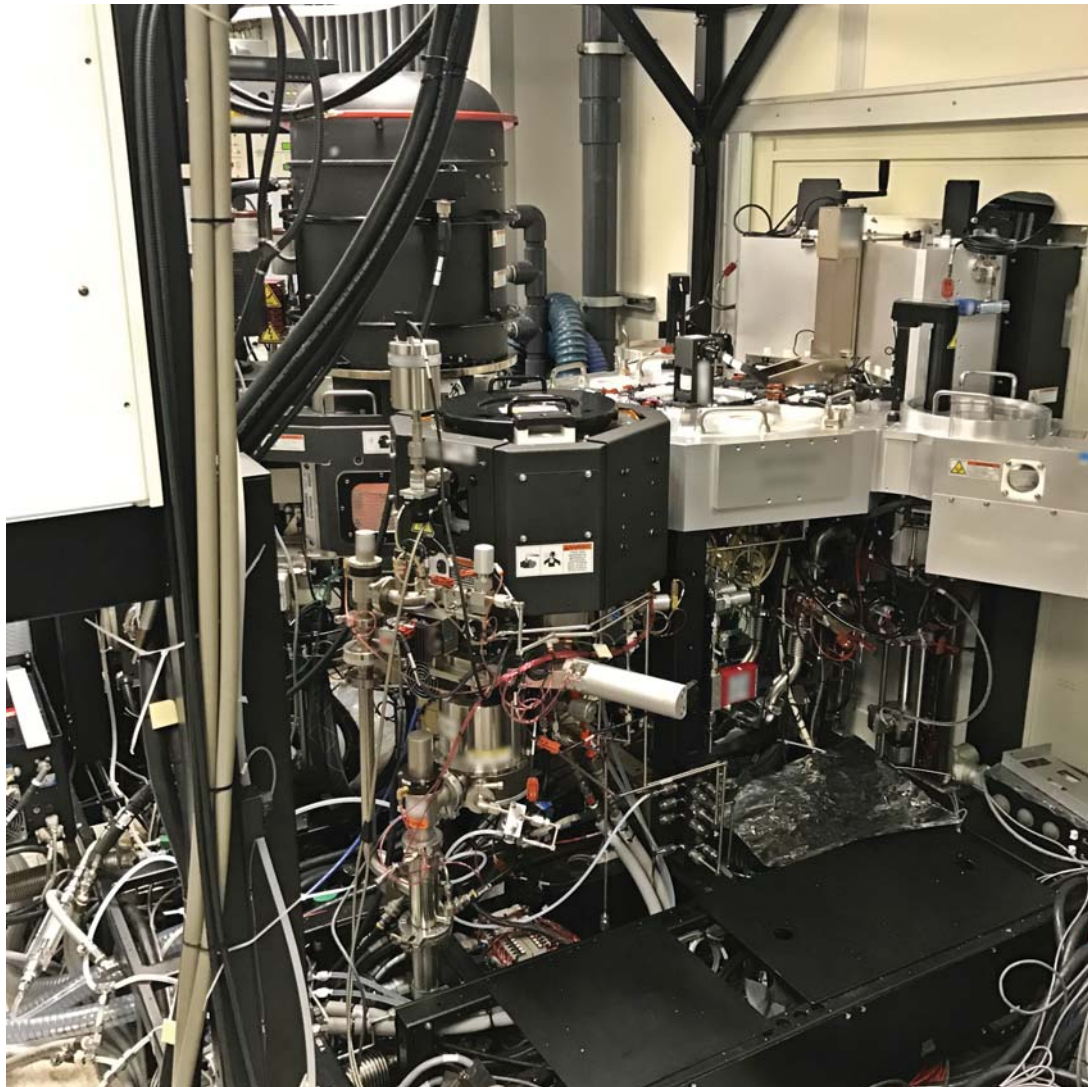
QUICK
LEAD TIMES



QUALITY
EQUIPMENT



COMPETITIVE
PRICING



Interested parties may contact Bridge Tronic Global for additional information at +1 949.396.1395 or sales@bridgetronic.com



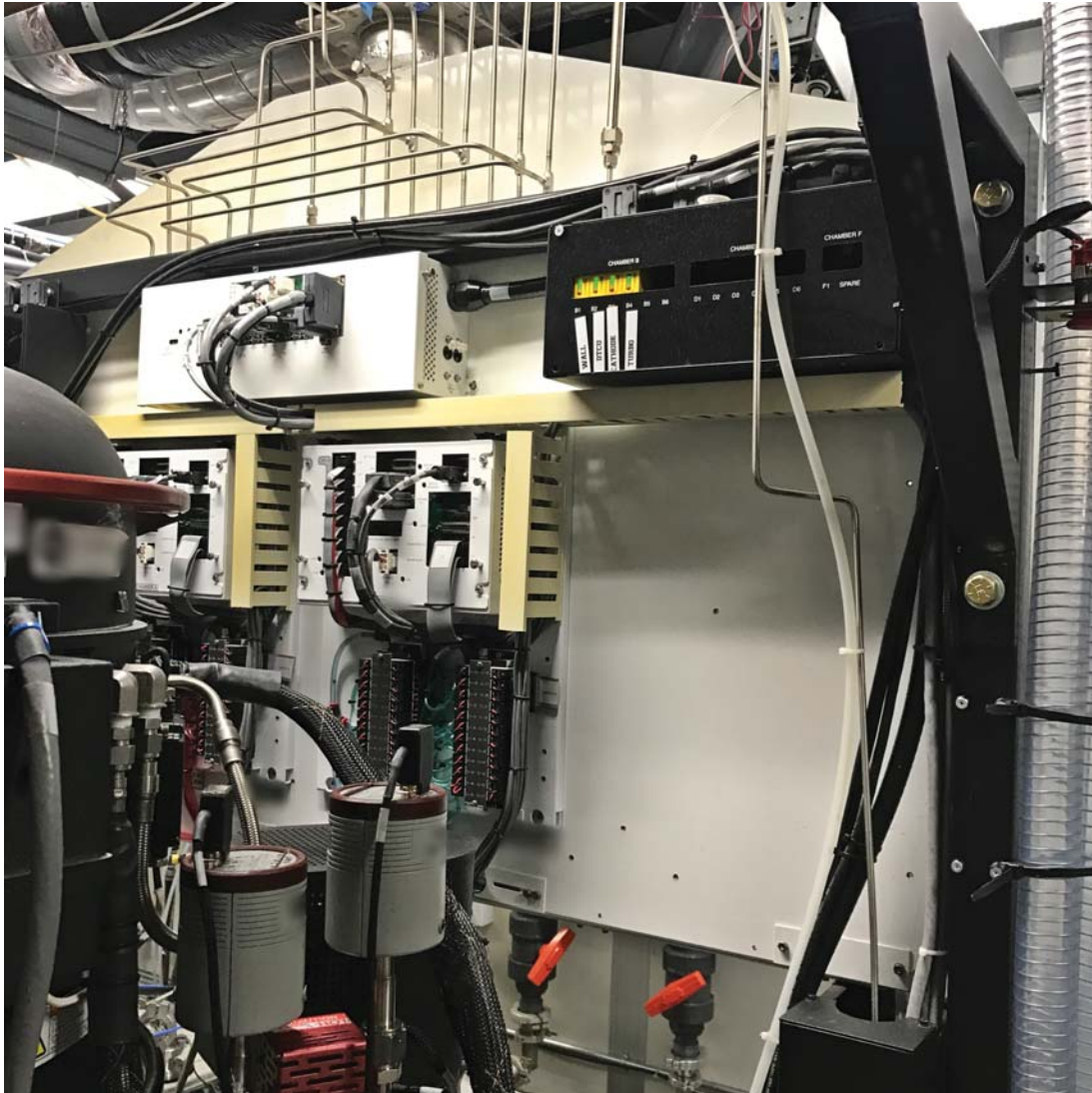
QUICK
LEAD TIMES



QUALITY
EQUIPMENT



COMPETITIVE
PRICING



Interested parties may contact Bridge Tronic Global for additional information at +1 949.396.1395 or sales@bridgetronic.com



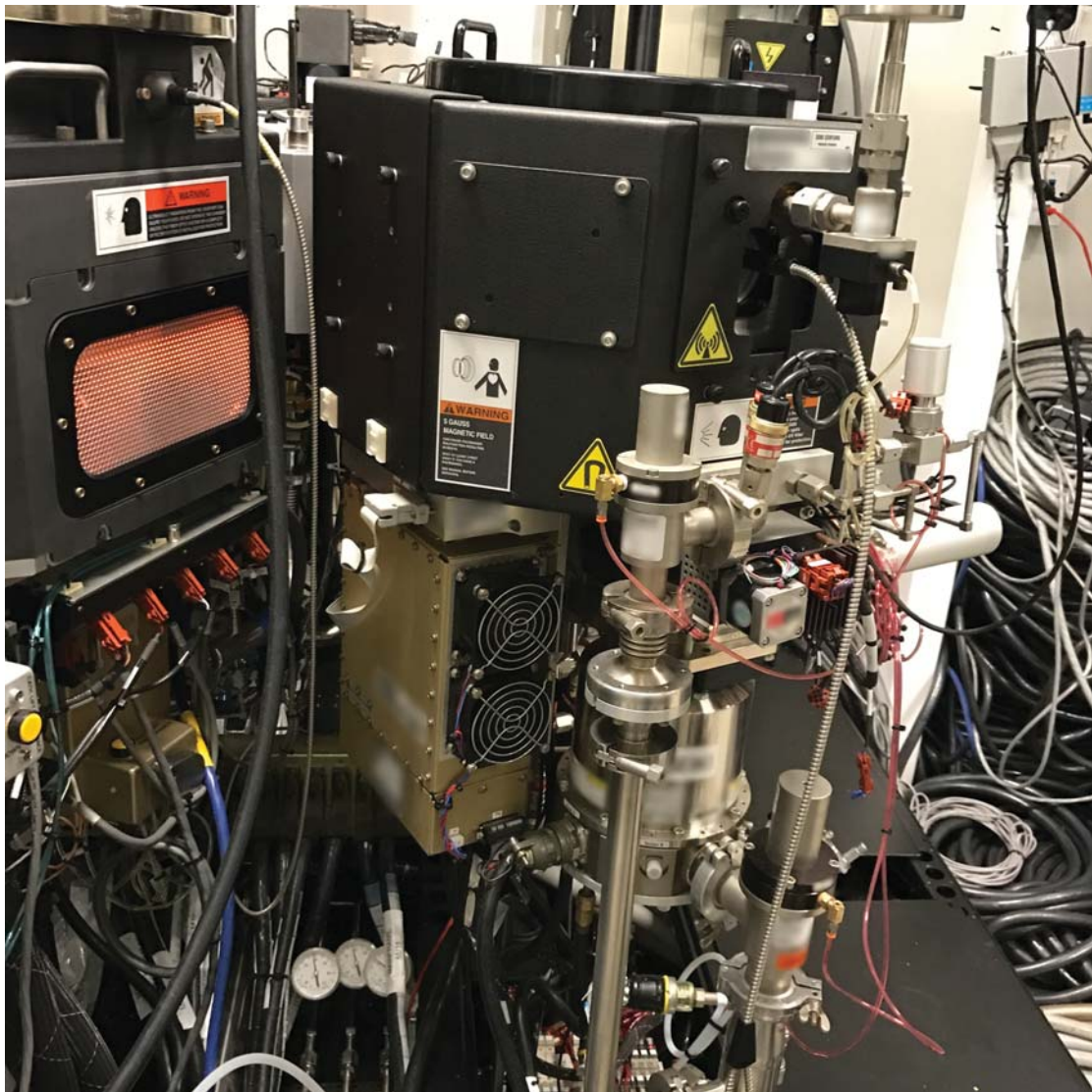
QUICK
LEAD TIMES



QUALITY
EQUIPMENT



COMPETITIVE
PRICING



Interested parties may contact Bridge Tronic Global for additional information at +1 949.396.1395 or sales@bridgetronic.com



QUICK
LEAD TIMES



QUALITY
EQUIPMENT



COMPETITIVE
PRICING



Interested parties may contact Bridge Tronic Global for additional information at +1 949.396.1395 or sales@bridgetronic.com



QUICK
LEAD TIMES



QUALITY
EQUIPMENT



COMPETITIVE
PRICING



Interested parties may contact Bridge Tronic Global for additional information at +1 949.396.1395 or sales@bridgetronic.com



QUICK
LEAD TIMES



QUALITY
EQUIPMENT



COMPETITIVE
PRICING



Interested parties may contact Bridge Tronic Global for additional information at +1 949.396.1395 or sales@bridgetronic.com



QUICK
LEAD TIMES



QUALITY
EQUIPMENT



COMPETITIVE
PRICING



Interested parties may contact Bridge Tronic Global for additional information at +1 949.396.1395 or sales@bridgetronic.com



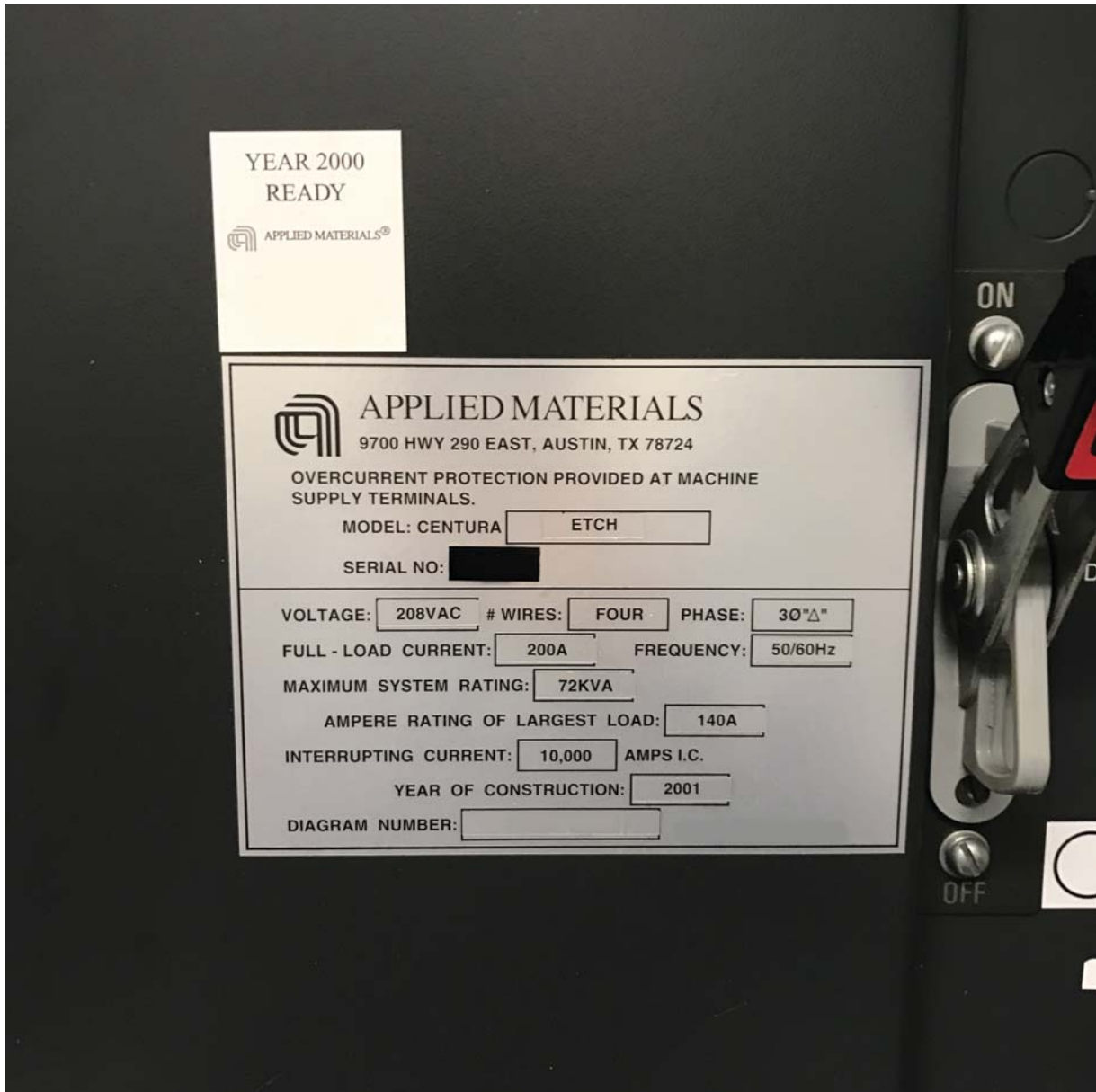
QUICK
LEAD TIMES



QUALITY
EQUIPMENT



COMPETITIVE
PRICING



Interested parties may contact Bridge Tronic Global for additional information at +1 949.396.1395 or sales@bridgetronic.com



QUICK
LEAD TIMES



QUALITY
EQUIPMENT



COMPETITIVE
PRICING